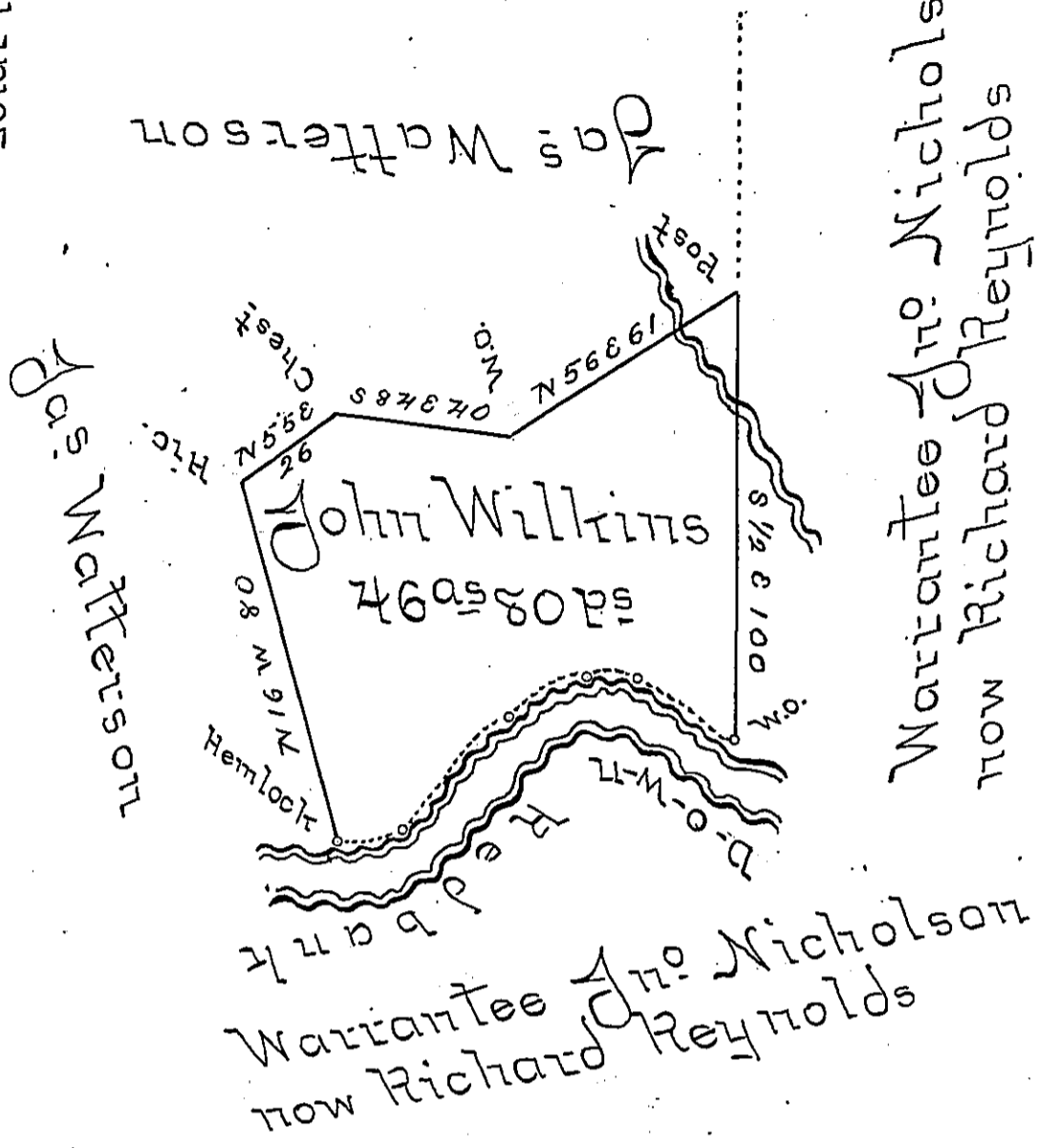


Courses and distⁿ
 Down Redbank
 N 60 W 25
 West. 11
 S 62 W 20
 S 45 W 35
 S 85 W 14
 Total 108



In pursuance of a Warrant dated Feb'y. 19th 1839. granted to John Wilkins - Surveyed to the same on the 23rd of March 1839. the above described Tract of land containing forty six acres and eighty perches and Allowance of six per cent & Situate in Madison Township Armstrong County

Jonathan E Meredith U.S.

To John Naylor Esq }
 Surveyor General }

IN TESTIMONY that the above is a copy of the original remaining on file in the Department of Internal Affairs of Pennsylvania, made conformably to an Act of Assembly approved the 16th day of February, 1833, I have hereunto set my Hand and caused the Seal of said Department to be affixed at Harrisburg, this seventh day of August 1900.

James W. Latta
 Secretary of Internal Affairs.